

# Introduction to the Safeguarding Resource and Support Hub (RSH)

Together, we can build a safer sector

Event title: Digna Conference

Date: 17<sup>th</sup> October 2023

# Overview

Supporting organisations in the international **humanitarian and development** sectors to strengthen their safeguarding policy and practice against **Sexual Exploitation, Abuse and Sexual Harassment (SEAH)**

## Vision

We are committed to being **collaborative**. We are driven by the needs of less-resourced **civil society organisations**, guided by **survivor-centred principles** and focused on **contextualised** products and services.

- Funded by UK Aid from December 2019 – November 2024
- A global multilingual online platform with 12 National Hubs across 4 regions

# Explore our Online Hub - [safeguardingsupporthub.org](https://safeguardingsupporthub.org)

---



# What does the Online Hub have to offer?



**Tools and resources** shared via newsletters



Free and interactive **e-learning course**, **Ask an Expert Service**



**Peer-learning** via mentorship, webinars, podcasts and blogs



**Directory** of safeguarding consultants



Available in English, French, Swahili, Arabic and more!

En | العربية | Français | Kiswahili



# National Hubs

---

## Africa

Ethiopia

Nigeria

South Sudan

## Middle East

Jordan

Syria

Yemen

## South Asia

Pakistan

Bangladesh

## Eastern Europe

Poland

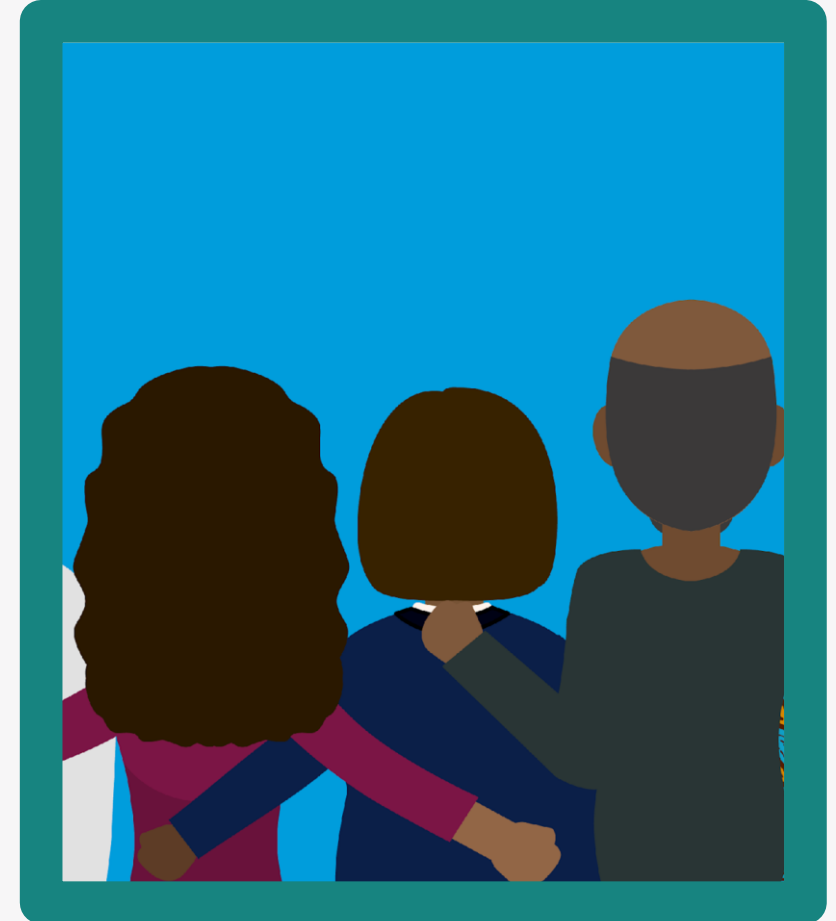
Romania

Moldova

# Our approach to National Hubs

---

- Our primary audience is less resourced CSOs in low income and fragile contexts
- Partnership and collaboration are central
- Strategic priorities are based on evidence from a Country Assessment and user survey
- Services are tailored, contextualised, translated and blended
- Strategic advice provided by National Expert Board in each Hub
- Activities include a Hub website with contextually relevant resources, a mentorship scheme, and an Ask and Expert service

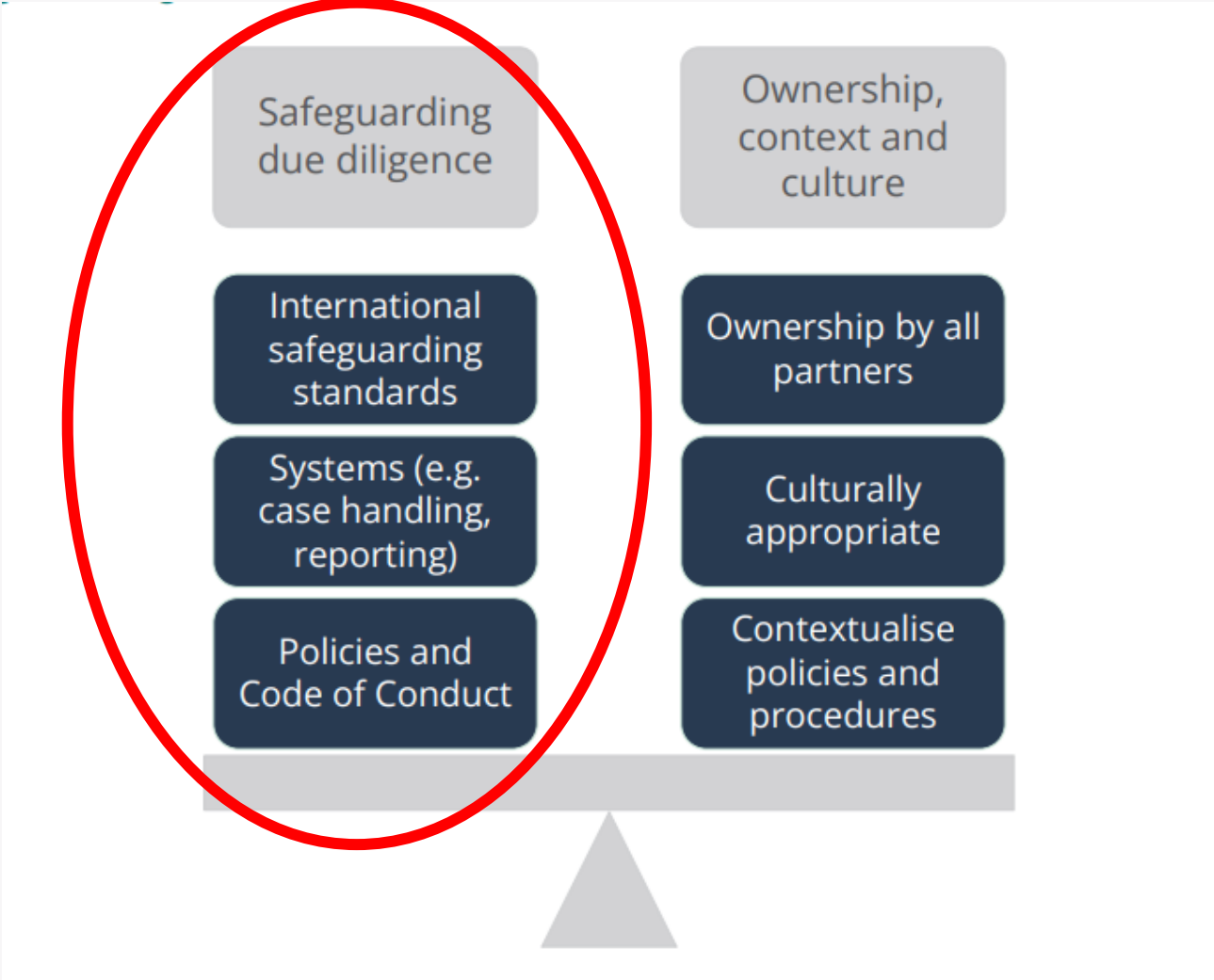


# Experience implementing at the hubs

---

- Implementing Safeguarding/PSEA is not a one-off exercise, one-off training is never enough
- There is need to contextualise safeguarding in the country and this is not a one-person activity
- Collaborative safeguarding/PSEA policy development is empowering
- Mentorship provides a targeted, direct, and sustainable form of capacity strengthening
- Safeguarding/PSEA implementation requires funds
- Difference between INGO expectations and context reality. It takes time
- INGOs taking over and playing the blame game when an incident happens does not build skills

# Due diligence out of balance with context and culture





# Challenges with implementation at country level

---

- Contextualising safeguarding can be time and resource-intensive
- Focusing on due diligence rather than capacity strengthening
- Safeguarding risk mitigation measures not properly planned for and funded
- Unrealistic expectations (timescales and conditions) from INGO funding partners
- Making CSOs abide by INGO policy without plans to support understanding and adaptation

# Voices from MENA region – the state of safeguarding across the MENA region

---

## Challenges/Barriers

- Limited funding/irregular funding pattern to implement safeguarding
- Limited availability of technical tools in Arabic
- Without leadership support safeguarding becomes tokenistic
- Fragility of the legal systems
- Capacity gap in terms of investigators
- Gender and social norms exacerbate power imbalance

## Enablers

### A. Internal

- Leadership commitment
- Dedicated Safeguarding leads

### B. External

- Safe and enabling environment for reports to be made
- Partnerships and collaborations

# Lessons Learned

---

- **Strengthen safeguarding risk assessment and management**
  - Key starting point for all safeguarding work
  - Challenging in short-term programmes
  - Some programmes are inherently risky and need to be designed and funded in ways that are more flexible
- **Embed safeguarding across the organization**
  - Good safeguarding prevention, reporting and response needs coordination and input from across the organization
  - This is relevant to HR, Programmes, communication, fundraising etc

# Lessons Learned

---

- **Improve community reporting**
  - Mechanisms may be in place but not always work
  - Recognise that community reporting requires consultation and time to build trust and create reporting mechanism that will be used
  - Make use of existing community reporting mechanisms
- **Strengthen survivor-centered approach**
- **Hold CSO leadership, donors, and staff to account**
  - Safeguarding is everyone's responsibility

# How does this relate to you?

---

Using mentimeter, share your experience by answering these questions

- From your experience what are the challenges in implementing safeguarding across different contexts?
- What key factors should be considered when contextualising and implementing safeguarding/PSEAH?

# Stay connected!

---



Visit our website on [safeguardingsupporthub.org](https://safeguardingsupporthub.org)



Sign up to our newsletter for the latest news and events



Follow us on social media @SafeguardingRSH

# Thank you! Any questions?

Emma Wokowu

Team Leader

Email: [Emma.Wokowu@rshub.org.uk](mailto:Emma.Wokowu@rshub.org.uk)

Oge Chukwudozie

Global Safeguarding Advisor

Email: [oge@rshub.org.uk](mailto:oge@rshub.org.uk)

**Visit the website:**

**[safeguardingsupporthub.org](https://safeguardingsupporthub.org)**

**Email: [info@safeguardingsupporthub.org](mailto:info@safeguardingsupporthub.org)**



RESOURCE  
& SUPPORT  
**HUB**

